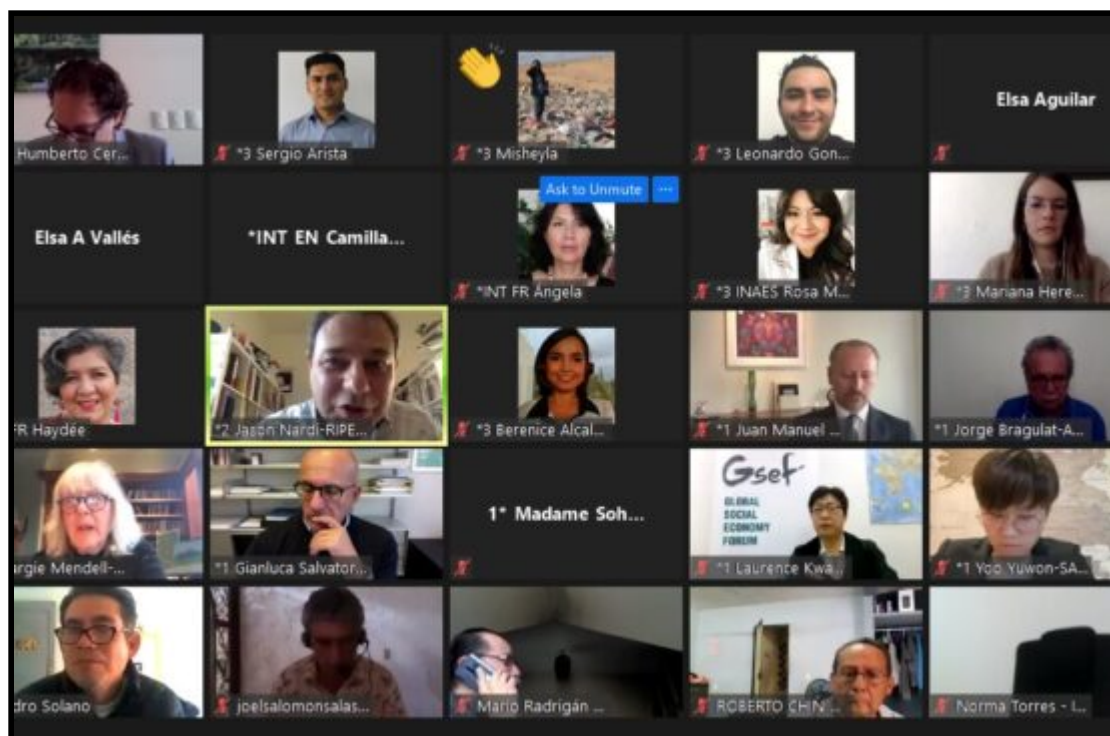


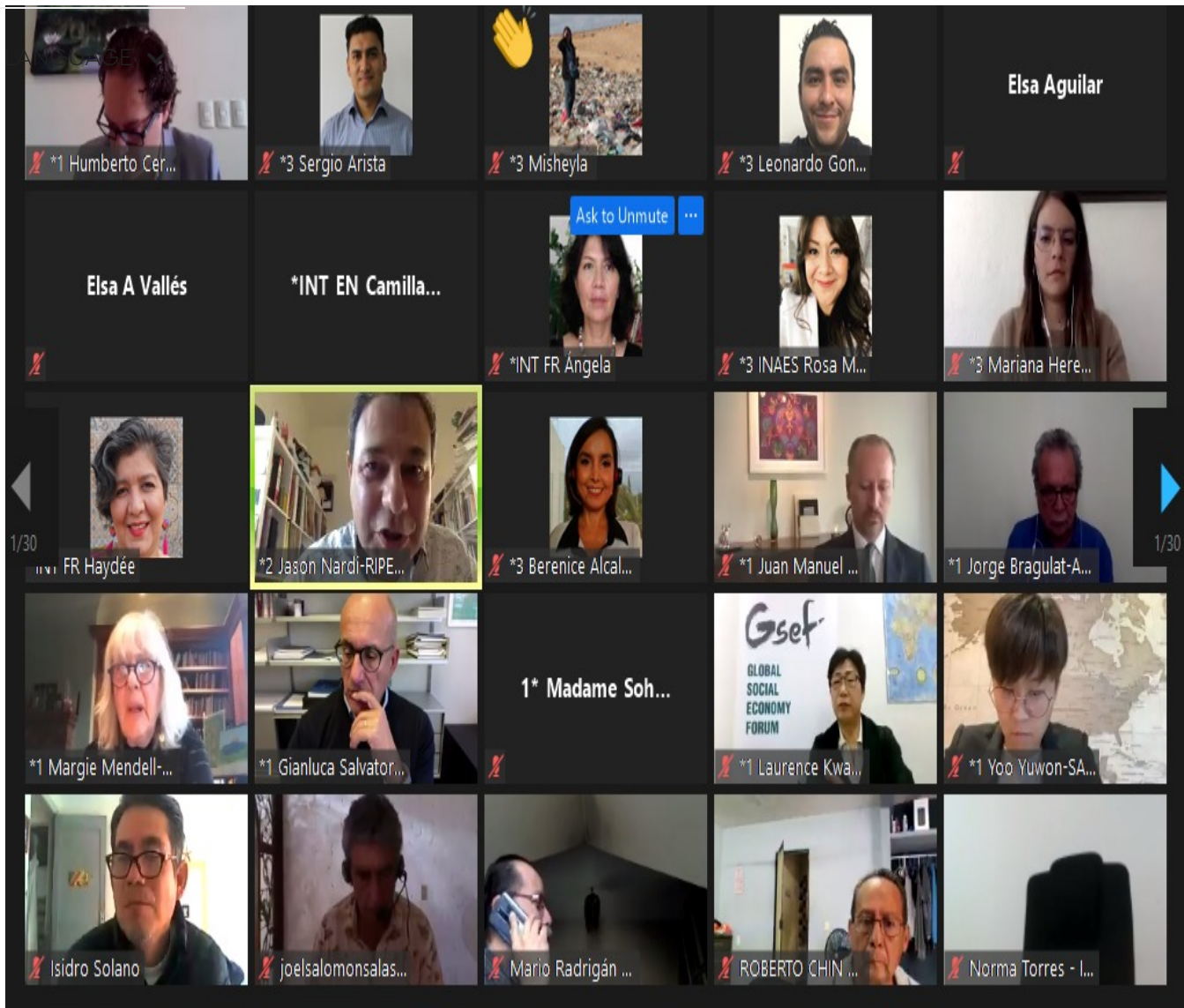
SOCIAL ECONOMY

PUBLISHED ON 27/10/2020 BY REDAZIONE

SSE IN TIMES OF GREAT CHALLENGES: A STRATEGY FOR INCLUSION AND WELL-BEING



ON 19TH OCTOBER OUR SECRETARY GENERAL **GIANLUCA SALVATORI** TOOK PART IN THE GSEF GLOBAL VIRTUAL FORUM 2020. THE CENTRAL THEME OF THE FORUM WAS “GREAT CHALLENGES, GREATER SOLIDARITY: POWER OF COMMUNITY AND SSE AS A PATH FOR TRANSFORMATION”. SALVATORI CONTRIBUTED HIS EXPERTISE IN THE FIRST PLENARY SESSION “SSE IN TIMES OF GREAT CHALLENGES: A STRATEGY FOR INCLUSION AND WELL-BEING”.



HERE YOU CAN READ THE HIGHLIGHTS OF HIS SPEECH.

THE PRICE OF COVID-19 PAID BY ITALY

ITALY IS ONE OF THE COUNTRIES THAT, AFTER CHINA, WAS FIRST AND MOST VIOLENTLY HIT BY **COVID-19**, WITH A HIGH PRICE IN TERMS OF HUMAN LIVES. TO FIGHT THE PANDEMIC, WE HAD ONE OF THE LONGEST AND MOST STRINGENT **LOCKDOWNS**. THE COUNTRY HAS COME TO A COMPLETE STANDSTILL FOR MORE THAN TWO MONTHS.

AS A CONSEQUENCE OF THE LOCKDOWN, WE HAVE SUFFERED THE IMPACT OF A **SEVERE ECONOMIC CRISIS**, WHICH HAS PRODUCED DEEP EFFECTS IN TERMS OF WELL-BEING. **NEARLY 600,000 JOBS** HAVE BEEN LOST SINCE THE LOCKDOWN BEGAN, DESPITE SUBSIDIES THAT THE GOVERNMENT HAS GIVEN TO BUSINESSES

WITH THE PROSPECT OF NEVER REOPENING. AND WHEN WE WERE STARTING TO THINK ABOUT RECOVERY, THE SECOND WAVE BEGAN. AND THIS IS THE STORY OF THESE DAYS, WHICH WE ARE EXPERIENCING LIVE.

A LESSON FOR THE SOCIAL AND SOLIDARITY ECONOMY

THE FIRST FINDING IS THAT THE PANDEMIC HAS UNDERMINED THE ASPIRATION OF THE PROFIT ENTERPRISE TO REPLACE THE STATE IN TAKING CARE OF PEOPLE'S WELL-BEING. IN THE LAST TEN YEARS, AND ESPECIALLY SINCE THE 2008 CRISIS, THE WORLD OF **FOR-PROFIT COMPANIES** HAS DEVELOPED A POWERFUL NARRATIVE WITH WHICH IT HAS DISTANCED ITSELF FROM ITS PAST. INSTEAD OF INSISTING ON THE PRIMACY OF THE SHAREHOLDER AND THE MAXIMIZATION OF PROFIT AS THE ULTIMATE GOAL OF THE COMPANY, THE ISSUE OF **SOCIAL RESPONSIBILITY** HAS TAKEN HOLD.

FROM WELFARE TO EDUCATION, FROM GENDER INCLUSION TO INNOVATION IN SOCIAL SERVICES, THE COMMITMENT OF SOCIALLY RESPONSIBLE COMPANIES CAN MAKE A DIFFERENCE ON EVERY TOPIC. THIS WAS THE MESSAGE WITH WHICH THE LEADERS GATHERED IN **DAVOS**, THE CEOS OF THE BUSINESS ROUNDTABLE, THE LEADERS OF LARGE CORPORATIONS – COMMITTED TO REDEFINING THE “PURPOSE” OF THEIR COMPANIES, SO THAT IT NO LONGER COINCIDES ONLY WITH THE INTEREST OF CAPITAL AND INVESTORS – IN RECENT YEARS HAVE HAMMERED US.

THEN CAME THE PANDEMIC AND THE WORLD SUDDENLY APPEARED IN A **DIFFERENT LIGHT**. THE ROLE OF FOR-PROFIT ENTERPRISES IN TAKING CARE OF SOCIAL WELL-BEING HAS NO LONGER BEEN AT THE CENTER OF THE DISCUSSION. **THE STATE** HAS TAKEN BACK SPACE AND POWER, BECAUSE IT HAS BEEN REALIZED THAT COLLECTIVE INSTITUTIONS WERE NEEDED IN THE FACE OF A **COLLECTIVE EMERGENCY**. THIS IS PRECISELY THE SECOND OBSERVATION ON WHICH I WOULD LIKE TO FOCUS YOUR ATTENTION. THE PANDEMIC, AT LEAST IN ITALY AND IN MANY EUROPEAN COUNTRIES, HAS HAD THE EFFECT OF BRINGING PUBLIC ACTION BACK TO THE CENTER. REMINDING US THAT WE HAVE ENTRUSTED TO THE PUBLIC POWERS THE AUTHORITY TO STOP A BUSINESS, CLOSE SCHOOLS, FREEZE SOCIAL LIFE AND CONFINE OURSELVES INDOORS IN OUR OWN INTEREST. ALL TASKS FOR WHICH THE MARKET AND ITS RULES ARE NOT SUITABLE. THE COVID-19 EMERGENCY HAS BROUGHT THE ROLE OF PUBLIC HEALTH AND THE IMPORTANCE OF UNIVERSAL ACCESS TO ASSISTANCE BACK

PERSPECTIVE THE PRESUMPTION THAT PRIVATE COMPANIES COULD ACT IN THE LANGUAGE NAME OF THE PUBLIC INTEREST.

THE STRIKING ROLE OF COMMUNITIES AND CIVIL SOCIETY

HOWEVER, THERE IS A THIRD OBSERVATION THAT EMERGES FROM THE EXPERIENCE OF THE PANDEMIC. IN FACT, IF IT IS TRUE THAT MARKET FORCES HAVE SHOWN THEIR LIMITS AND THE ROLE OF THE STATE HAS APPEARED FUNDAMENTAL, WE HAVE SEEN HOW DECISIVE A THIRD COMPONENT HAS ALSO BEEN: I AM REFERRING TO THE **ROLE OF COMMUNITIES AND CIVIL SOCIETY**. THE ORDERS AND MEASURES OF THE PUBLIC AUTHORITY WERE EFFECTIVE NOT SO MUCH FOR FEAR OF SANCTIONS BUT FOR THE CIVIC SENSE OF THE PEOPLE, WHO ACCEPTED LIMITATIONS AND PROHIBITIONS IN THE NAME OF THE COMMON GOOD. THIS IS PERHAPS THE ASPECT THAT MOST STRUCK THE ITALIAN CASE.

THE TIME OF THE PANDEMIC HAS BEEN AN EXCEPTIONAL TRAINING GROUND FOR GRASPING THE IMPORTANCE OF AN APPROACH THAT IS NOT SOLELY ORIENTED TOWARDS PROFIT AND NOT EVEN BASED EXCLUSIVELY ON THE EXERCISE OF AUTHORITY. IN MORE THEORETICAL TERMS, THIS PERIOD HAS MADE IT CLEAR THAT **THE SPACE BETWEEN THE STATE AND THE MARKET** IS NOT PURELY MARGINAL BUT PLAYS AN ESSENTIAL FUNCTION. MANY OF THE SERVICES THAT ARE ESSENTIAL TO PEOPLE'S WELL-BEING – FROM CARE TO EDUCATION – CAN BE PRODUCED IN THIS SPACE WHERE SOCIAL AND SOLIDARITY ECONOMY ORGANIZATIONS OPERATE.

NEW OPPORTUNITIES FOR SSE DEVELOPMENT

WHEN THE EFFECT OF PUBLIC SUBSIDIES ENDS, THE ROLE OF THE SOCIAL ECONOMY IN COUNTERING THE LOSS OF JOBS WILL BE DECISIVE, AS HAD ALREADY HAPPENED AFTER THE 2008 CRISIS. THE NEED TO ENHANCE HEALTH, SOCIAL CARE AND EDUCATION SERVICES WILL OFFER **GREAT OPPORTUNITIES** FOR FURTHER DEVELOPMENT OF THE SOCIAL AND SOLIDARITY ECONOMY. IN A COMPLEX SOCIETY LIKE OURS, WITH GROWING SOCIAL NEEDS, THE RETURN TO THE SCENE OF THE STATE IN A CENTRAL POSITION WILL NOT BE SUFFICIENT TO GUARANTEE EQUITABLE SOCIAL DEVELOPMENT. AFTER MANY YEARS OF THINKING CENTERED ON THE VIRTUES OF THE MARKET ECONOMY, IT WILL NOT BE THE PANDEMIC THAT WILL MAKE US BELIEVE THAT THE SOLUTION IS A

AND FAR-SIGHTED.



ONE OF THE EFFECTS OF THE PANDEMIC WILL BE THE ACCELERATION OF THE TRANSITION FROM A VISION OF WELFARE CENTERED ON THE STATE TO A VISION CENTERED ON THE WHOLE SOCIETY, THE SO-CALLED **WELFARE-SOCIETY**. IN WHICH THE PRODUCTION OF CARE AND ASSISTANCE SERVICES WILL BE DISTRIBUTED AMONG A PLURALITY OF DIFFERENT ACTORS, AMONG WHICH A CRUCIAL ROLE WILL BE PLAYED BY THE ORGANIZATIONS OF THE SOCIAL AND SOLIDARITY ECONOMY. THIS FORECAST IS BASED ON THE FACT THAT WE ARE EXPERIENCING A CONSTANT TRANSFORMATION OF CARE SERVICES IN THE SENSE OF THEIR GREATER **PERSONALIZATION**. THIS TREND REQUIRES A READING OF THE NEEDS ATTENTIVE TO THE CONTEXT OF SPECIFIC COMMUNITIES.

TO GIVE YOU AN EXAMPLE DERIVING FROM THE ITALIAN EXPERIENCE: THE COVID-19 EMERGENCY HAS HIGHLIGHTED THAT AN EFFICIENT HOSPITAL SYSTEM, BASED ON A SYSTEM OF LARGE CENTRALIZED INSTITUTIONS, IS NOT ENOUGH TO FIGHT AN EPIDEMIC, BUT AN EQUALLY EFFICIENT LOCAL MEDICINE IS NEEDED. TODAY WE UNDERSTAND THAT PREVENTION AND MONITORING ARE INDISPENSABLE WEAPONS TO TACKLE THE PANDEMIC. BUT THIS MEANS A **COMMUNITY HEALTH MODEL** MORE THAN A CENTRALIZED AND VERTICALIZED HEALTH MODEL. THE ROLE OF LOCAL HEALTHCARE IS THEREFORE EXTREMELY IMPORTANT, INTEGRATED WITH A NETWORK OF HOME SERVICES. IN ITALY THE VAST MAJORITY OF THESE SERVICES ARE PROVIDED BY SOCIAL ECONOMY ORGANIZATIONS, WHICH ARE THEREFORE CALLED UPON TO PERFORM AN ESSENTIAL FUNCTION.

A NEW APPROACH TO GET OUT OF THE CRISIS

OF THE COMMUNITIES TO WHICH THEY ARE ADDRESSED. THE ABILITY TO INCLUDE A VARIETY OF ACTORS IN THE DESIGN, ENHANCING THEIR SKILLS AND RESOURCES, WILL BE CRUCIAL.

THIS ORIENTATION DOES NOT ONLY CONCERN THE PRODUCTION OF SOCIAL SERVICES BUT ALSO APPLIES TO MANY OTHER SECTORS OF ECONOMIC LIFE, IN WHICH IT IS IMPORTANT TO ESTABLISH A **PACT OF TRUST BETWEEN PRODUCER AND CONSUMER**. THIS APPLIES FOR EXAMPLE TO THE AGRICULTURAL INDUSTRY, WHERE THE ISSUE OF FOOD SAFETY REQUIRES AN ALIGNMENT OF INTERESTS BETWEEN PRODUCERS AND FINAL CONSUMERS; IT IS ALSO TRUE FOR THE BANKING INDUSTRY, WHERE THE RELATIONAL DIMENSION IS A NECESSARY ELEMENT TO FACILITATE ACCESS TO CREDIT BY THE MOST FRAGILE SOCIAL CATEGORIES; AND WE COULD CONTINUE, WITH MANY OTHER EXAMPLES IN WHICH THE SOCIAL ECONOMY APPROACH RESPONDS TO THE REAL NEEDS OF OUR POST-COVID TIME.

[READ MORE](#)

PUBLISHED ON 31/08/2020 BY REDAZIONE

EURICSE JOINED THE SPATIAL PRODUCTIVITY LAB AT THE OECD



EURICSE JOINED THE **SPATIAL PRODUCTIVITY LAB** AT THE OECD TRENTO CENTRE TOGETHER WITH AN INTERNATIONAL NETWORK OF OTHER LEADING RESEARCH INSTITUTIONS SUCH AS THE **UNIVERSITY OF TRENTO**, THE **BANK OF ITALY**, **SHEFFIELD UNIVERSITY** AND **OHIO STATE UNIVERSITY**. EURICSE WILL FOCUS ON THE FIELD OF SOCIAL ECONOMY AND ITS ROLE IN ENHANCING LOCAL PRODUCTIVITY. AS A FIRST STEP OF THIS COLLABORATION, EURICSE IS COLLABORATING WITH SPL ON A STUDY ON BEHALF OF THE **MINISTRY OF ECONOMIC DEVELOPMENT** ON THE PRODUCTIVITY OF ITALIAN COOPERATIVES.

THE OECD LEED TRENTO AND THE SPD

THE **OECD LEED TRENTO** CENTRE FOR LOCAL DEVELOPMENT WAS CREATED IN 2003 WITH THE MISSION OF **BUILDING CAPACITIES FOR LOCAL DEVELOPMENT** IN OECD MEMBER AND NON-MEMBER COUNTRIES. AS AN INTEGRAL PART OF THE OECD'S BROADER WORK ON PRODUCTIVITY, THE SPATIAL PRODUCTIVITY LAB

AND TO WHAT EXTENT AGGREGATE PRODUCTIVITY DEPENDS ON THE
LANGUAGE ▼
ECONOMIES OF AGGLOMERATION GENERATED IN CITIES.

ITALIAN COOPERATIVES, A NEW FOCUS

STARTING IN 2020, THE SPATIAL PRODUCTIVITY LAB WILL ALSO FOCUS ON
PRODUCTIVITY AND INNOVATION OF ITALIAN COOPERATIVES. TO REINFORCE
THIS NEW FIELD OF ACTIVITY, EURICSE IS JOINING THE NETWORK, SHARING ITS
RESEARCH SKILLS, KNOWLEDG AND EXPERIENCE RELEVANT TO THE CONCEPT
OF SPATIAL PRODUCTIVITY.

“EURICSE WILL BE HAPPY TO CONTRIBUTE TO THIS INITIATIVE AND TO SHARE
WITH OTHER MEMBERS OF THE NETWORK OUR KNOWLEDGE AND EXPERTISE ON
THE ROLE AND CHARACTERISTICS OF SOCIAL ECONOMY ORGANIZATIONS”,
COMMENTED THE PRESIDENT OF EURICSE, **CARLO BORZAGA.**

[READ MORE](#)

PUBLISHED ON 27/06/2019 BY REDAZIONE

UN INTER-AGENCY TASK FORCE ON SSE, THE INTERNATIONAL CONFERENCE IN GENEVA



THE GENERAL SECRETARY OF EURICSE, **GIANLUCA SALVATORI**, PARTICIPATED ON THE 25TH AND 26TH OF JUNE AT INTERNATIONAL CONFERENCE ON SSE IN GENEVA. THIS EVENT IS PART OF A SERIES OF CONFERENCES RESULTING FROM THE CALL FOR PAPERS “**IMPLEMENTING THE SUSTAINABLE DEVELOPMENT GOALS: WHAT ROLE FOR SOCIAL AND SOLIDARITY ECONOMY?**” LAUNCHED BY THE UNITED NATIONS INTER-AGENCY TASK FORCE ON SOCIAL AND SOLIDARITY ECONOMY (UNTF SSE) IN 2018. SALVATORI SPOKE ON A PANEL DEDICATED TO “**SSE AND SOUTH-SOUTH AND TRIANGULAR COOPERATION**“. THE CONFERENCE WAS HOSTED IN GENEVA DURING THE CELEBRATION FOR THE CENTENARY OF THE INTERNATIONAL LABOUR ORGANIZATION.

BELOW WE ARE PUBLISHING AN ABSTRACT OF HIS SPEECH.

THE DEVELOPMENT OF SEE THROUGH SOCIAL URBANISM

LANGUAGE ▼



SLUMS IN MEDELLIN (COLOMBIA)

IN **LATIN AMERICA** – IN COUNTRIES LIKE ARGENTINA, URUGUAY, BRAZIL, COLOMBIA, ECUADOR AND BOLIVIA – EXPERIENCES HAVE EMERGED THROUGH GOVERNMENT PROGRAMS, FRAMED WITHIN THE DESIGN AND APPLICATION OF THEIR POLICIES PUBLIC, DEVELOPING STRATEGIES WITHIN THE DISCOURSE OF SOLIDARITY ECONOMY WITH THE OBJECTIVE TO **IMPROVE THE QUALITY OF LIFE OF PEOPLE**. PROBABLY ONE OF THE MOST INNOVATIVE AND ORIGINAL ASPECTS OF THE DEVELOPMENT STRATEGIES OF A SOCIAL AND SOLIDARITY ECONOMY CONSISTS IN THE STRUCTURAL RELATIONSHIP WITH THE POLICIES OF **SOCIAL URBANISM**.

THREAT OF PARAMILITARY AND GUERRILLA ORGANIZATIONS (LIKE FARC), THERE HAS BEEN A **HUGE POPULATION SHIFT IN URBAN AREAS**. IN A FEW YEARS MEDELLIN HAS PRACTICALLY DOUBLED ITS POPULATION. THE NEW ARRIVALS WENT TO OCCUPY THE PERIPHERAL AREAS ON THE STEEP HILLS AROUND THE CITY.

URBAN SCHOLARS AND PRACTITIONERS TODAY LOOK UP TO MEDELLIN AS **ONE OF THE MOST PROGRESSIVE CITIES IN THE WORLD**. WINNER OF AN IMPRESSIVE AMOUNT OF AWARDS, MEDELLIN TRULY BECAME A MODEL TO FOLLOW WHEN IT COMES TO ADDRESSING **URBAN CHALLENGES** LIKE VIOLENCE, INSECURITY, POOR EDUCATION, AND LACK OF MOBILITY, WHICH ALL REINFORCE THE SPATIAL AND MATERIAL INEQUALITIES IN OUR CITIES TODAY.



THE CABLE CAR IN MEDELLIN CONNECTING SLUMS TO THE CITY

A “**METHODOLOGY OF PARTNERSHIP WITH THE COMMUNITY**” IN ORDER TO UPGRADE INFORMAL SETTLEMENTS WAS FOLLOWED BY THE TWO MAYORS, LUIS PEREZ AND SERGIO FAJARDO, WHO WERE ELECTED RESPECTIVELY IN 2000 AND 2004. INVESTING IN A CABLE CAR TO CONNECT THE SLUMS TO THE CITY CENTRE WAS THE FIRST STEP, **FIGHTING THE MARGINALISATION OF THE POPULATIONS LIVING IN THE INFORMAL SETTLEMENTS (“COMUNAS”) ON HILLSIDES OF MEDELLIN AND REPRESENTING HALF OF THE ENTIRE POPULATION OF MEDELLIN.**

LANDSCAPING, FROM STREET LIGHTING TO CULTURAL CENTRES” – IMPLEMENTED BETWEEN 2004 AND 2007:

- “THE PARQUE EXPLORA, A PARK WITH A FREE SCIENCE MUSEUM IN IT;
- THE BOTANICAL GARDENS, SITE OF THE OCTAGONAL ORQUIDEORAMA; TEN NEW SCHOOL BUILDINGS;
- FIVE AMBITIOUS LIBRARY-PARKS IN THE COMUNAS OF SANTO DOMINGO, LA QUINTANA, LA LADERA, SAN JAVIER AND BELÉN;
- A CULTURAL CENTRE IN THE RUN-DOWN DISTRICT OF MORAVIA;
- AND THE COMPLETION AND EXTENSION OF THE METROCABLE

FRAMED BY THE DRUG TRAFFICKING PROBLEM FOR ALMOST A DECADE (1985-1993) – THAT REORIENTED IN GREATLY MEASURE THE SOCIAL STRUCTURE, CULTURAL BEHAVIOR AND IN GENERAL THE ECONOMY OF THE CITY. THEN, A SOCIO-ECONOMIC CRISIS EXPERIENCED BETWEEN 1995 AND THE BEGINNING OF THIS CENTURY, WITH UNEMPLOYMENT LEVELS ABOVE 20% (1999), HAD A GREAT IMPACT AS WELL. THE “PLAN DECENAL DE ECONOMÍA SOCIAL Y SOLIDARIA PARA MEDELLÍN 2016-2025”, WRITTEN BY GAVIRIA CORREO AND ALCALDE DE MEDELLÍN, **HAS NO PRECEDENTS IN THE COUNTRY** AND INVOLVES ALL SUBJECTS THAT ARE PART OF THIS SECTOR: COOPERATIVES, MUTUALS, CORPORATIONS, ASSOCIATIONS, EMPLOYEE FUNDS, PRE-COOPERATIVES AND FOUNDATIONS, AMONG OTHERS. THE DECENNIAL PLAN IS ROOTED ON A WIDER SET OF PUBLIC POLICIES, STARTING FROM THE EARLY 2000S, THAT AIMED TO SUPPORT THE SOCIAL AND SOLIDARITY ECONOMY THROUGH AN ORIGINAL COMBINATION WITH PARTICIPATORY LOCAL PLANNING RELATED TO THE “SOCIAL URBANISM”.



VIEW OF MEDELLIN (COLOMBIA)

THE MEDELLIN CASE SHOWS THAT TACKLING THE COMPLEXITIES OF PERIPHERAL URBAN INFORMAL SETTLEMENTS REQUIRES:

- THE INVESTMENTS IN **INNOVATIVE MOBILITY SYSTEMS** (CABLE CAR), **RENEWAL OF EDUCATIONAL FACILITIES** LIKE SCHOOLS AND LIBRARIES AND THE **BEAUTIFICATION OF PUBLIC SPACES**, HAVE GONE HAND IN HAND WITH STRATEGIES OF INTERVENTION FROM THE PERSPECTIVE OF THE SOCIAL AND SOLIDARITY ECONOMY.
- THE INTRODUCTION OF **NEW GOVERNANCE MODELS** THAT, BEYOND THE PUBLIC AND PRIVATE DYCHOTOMY, RECOGNIZE THE IMPORTANCE AND VALUE OF THE ESS.

BUSINESS FABRIC OF THE INFORMAL SETTLEMENTS OF MEDELLÍN THROUGH
LANGUAGE ▼
THE GENERATION OF INCOME AND DECENT JOBS.

“SOCIAL URBANISM” IS THE BEST PRACTICE THAT MEDELLIN SHOWCASES IN THE INTERNATIONAL COMMUNITY, PROVING THE POSITIVE IMPACT OF THE CONSTRUCTION OF SOCIAL INFRASTRUCTURE, WHICH ALLOWS FOR AN IMPROVED ACCESS TO EDUCATION, MOBILITY, AND SAFER PUBLIC SPACES. THE MEDELLIN EXPERIENCE HAS PROVIDED A **ROLE MODEL FOR MANY OTHER CITIES, SPECIALLY IN THE GLOBAL SOUTH.**

[READ MORE](#)

PUBLISHED ON 08/08/2018 BY REDAZIONE

**SOCIAL ECONOMY, SALVATORI IN THE
EUROPEAN COMMISSION’S EXPERT GROUP**

LANGUAGE ▼



GIANLUCA SALVATORI, EURICSE SECRETARY GENERAL, HAS BEEN APPOINTED MEMBER OF A NEW EXPERT GROUP ON “SOCIAL ECONOMY AND SOCIAL ENTERPRISE” SET UP BY THE EUROPEAN COMMISSION’S SOCIAL BUSINESS INITIATIVE (SBI). THE PURPOSE OF THIS NEW GROUP WILL BE TO DISCUSS AND AGREE ON DEVELOPING AND STRENGTHENING ACTIVITIES RELATED TO THE DEVELOPMENT OF THE POTENTIAL OF THE SOCIAL ECONOMY AND SOCIAL ENTERPRISES, AIMING TO PROMOTE INNOVATION AND POSITIVE IMPACT ON THE ECONOMY AND SOCIETY AT LARGE. THE EXPERT GROUP’S ACTIONS WILL FOCUS ON 5 PILLARS: ACCESS TO FINANCE, ACCESS TO MARKETS, BETTER FRAMEWORK CONDITIONS, NEW TECHNOLOGIES AND SOCIAL INNOVATION, AS WELL AS THE DEVELOPMENT OF AN INTERNATIONAL DIMENSION.

[\(MORE...\)](#)

READ MORE

PUBLISHED ON 23/11/2015 BY REDAZIONE

ECONOMY – 6TH EDITION



PUEBLA, MEXICO

23RD-27TH NOVEMBER 2015

THE INTERNATIONAL LABOUR ORGANIZATION AND THE NATIONAL INSTITUTE OF SOCIAL ECONOMY OF MEXICO (INAES) ARE ORGANIZING AN ACADEMY ON SOCIAL AND SOLIDARITY ECONOMY (SSE) THAT WILL TAKE PLACE IN MEXICO, FROM 23 TO 27 OF NOVEMBER 2015, AT THE IBERO-AMERICAN UNIVERSITY IN PUEBLA. ([MORE...](#))

[READ MORE](#)

PUBLISHED ON 21/10/2015 BY REDAZIONE

NEW EMES BOARD OF DIRECTORS



WE ARE PLEASED TO ANNOUNCE THAT OUR RESEARCHER [GIULIA GALERA](#) HAS BEEN ELECTED NEW MEMBER OF THE EMES BOARD OF DIRECTORS, WHICH WAS NOMINATED BY ALL MEMBERS OF THE THE NETWORK IN OCTOBER 2015. THE ELECTION PROCESS LASTED FIVE MONTHS WITH OPEN CALL FOR CANDIDATES FROM AROUND THE WORLD AND A FINAL E-VOTING SYSTEM IN PLACE. ([MORE...](#))

[READ MORE](#)

PUBLISHED ON 09/10/2015 BY REDAZIONE

**THE ROLE OF SOCIAL AND SOLIDARITY
ECONOMY IN EMPLOYMENT GENERATION**

LANGUAGE ▼



3rd World Forum of Local Economic Development

TORINO 2015 | 13 - 16 OCTOBER

A PANEL BY EURICSE AND ILO FOR THE 3RD WORLD FORUM OF LOCAL ECONOMIC DEVELOPMENT

EURICSE WILL PARTICIPATE IN THE 3RD WORLD FORUM OF LOCAL ECONOMIC DEVELOPMENT (TURIN, 13-16 OCTOBER 2015) ORGANIZING TOGETHER WITH THE ILO THE PANEL THE ROLE OF SOCIAL AND SOLIDARITY ECONOMY IN EMPLOYMENT GENERATION. ([MORE...](#))

[READ MORE](#)

PUBLISHED ON 16/09/2015 BY REDAZIONE

FELLOW AT EURICSE



SOCIAL ENTERPRISE BETWEEN SOCIAL IMPACT AND FINANCIAL NEEDS

YIORGOS ALEXOPOULOS IS RESEARCHER AT THE AGRICULTURAL UNIVERSITY OF ATHENS (GREECE) AND SENIOR RESEARCH FELLOW AT EURICSE IN THE FRAMEWORK OF THE PROJECT “RESEARCH IN SOCIAL ENTERPRISE, ITS SOCIAL IMPACT AND ITS FINANCIAL NEEDS”(RISE GRIT). THE PROJECT IS AWARDED BY A MARIE CURIE ACTION – INTRA-EUROPEAN FELLOWSHIPS FOR CAREER DEVELOPMENT (IEF), 7FP. ([MORE...](#)).

[READ MORE](#)

PUBLISHED ON 14/07/2015 BY REDAZIONE

ENTREPRENEURSHIP, A CONCLUDING ANALYSIS



WE REPORT SOME CONCLUDING COMMENTS ON THE **EUROPEAN SUMMER SCHOOL ON SOCIAL ECONOMY** FROM **DINA RAKIN***:

TWO YEARS AGO I HEARD ABOUT THE **ESSE SUMMER SCHOOL** FROM MY DEAREST COLLEAGUE. “SINCE YOU ARE CURIOUS ABOUT THE SOCIAL ECONOMY WORLD AND YOU ARE INTO QUESTIONING SO MANY ASPECTS OF IT, THIS SCHOOL IS FOR YOU”, SHE SAID. AND SHE WAS RIGHT. SIMPLE EXPLANATION, MAYBE TOO OBVIOUS. (MORE...).

[READ MORE](#)

LANGUAGE ▾

ECONOMY, THE SECOND DAY DESCRIBED BY

DINA RAKIN



DINA RAKIN* SHARES HER IMPRESSIONS ON THE SECOND DAY OF THE EUROPEAN SUMMER SCHOOL ON SOCIAL ECONOMY IN BERTINORO.

DENNIS R. YOUNG AND **SILVIA FERREIRA**, LECTURERS OF THE DAY, WERE COMMITTED TO PLACE THE CONCEPT OF PERSONALISATION INTO THE EXISTING THEORY AND PRACTICE OF NON-PROFITS, MAINLY SOCIAL ECONOMY AND SOCIAL ENTREPRENEURSHIP. **USER IS THE KEY WORD.** HOW THE TYPE OF FINANCING OF SOCIAL ENTERPRISE AND ITS LEGAL FORM INFLUENCE USERS AND HOW THE CHARACTERISTICS OF A SOCIAL ENTREPRENEUR RESPOND TO THE USERS! ([MORE...](#))

[READ MORE](#)

PUBLISHED ON 07/07/2015 BY REDAZIONE

LANGUAGE ▼

THE CO-OPERATIVE ADVANTAGE



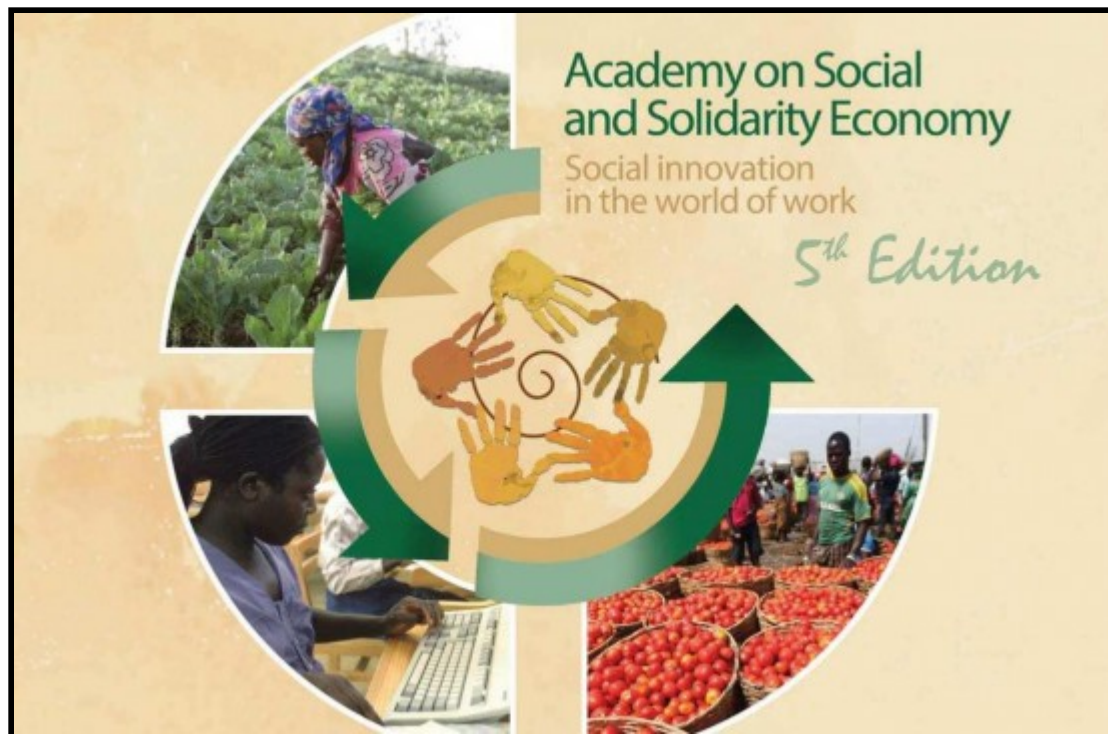
INNOVATION, CO-OPERATION AND WHY SHARING BUSINESS OWNERSHIP IS GOOD FOR BRITAIN.

THE CO-OPERATIVE ADVANTAGE, EDITED BY **ED MAYO**, IS A BLUEPRINT FOR A FUTURE SOCIAL ECONOMY IN THE UK AND DRAWS ON RESEARCH OVER THREE YEARS WITH CO-OPERATIVE BUSINESS EXPERTS, ADVISED BY **PROFESSOR MICHAEL BEST**, UNIVERSITY OF MASSACHUSETTS LOWELL, AN INTERNATIONALLY RECOGNIZED AUTHORITY ON SECTOR DEVELOPMENT. ([MORE...](#))

READ MORE

LANGUAGE ▼

ACADEMY – 5TH EDITION



JOHANNESBURG, SOUTH AFRICA, 27TH-30 JULY 2015

THE THEME OF THE 5TH EDITION OF THE ILO ACADEMY ON SOCIAL AND SOLIDARITY ECONOMY WILL BE “SOCIAL INNOVATION IN THE WORLD OF WORK”. THE ILO GLOBAL CONSTITUENTS, DEVELOPMENT PARTNERS IN SOUTH AFRICA AND OTHER STAKEHOLDERS HAVE BEEN INVOLVED IN THE DISCUSSION OF THE RELATED SUB-TOPICS IN ORDER TO ENSURE THAT THE CONTENT OF THE ACADEMY IS DEMAND DRIVEN BASED ON THE CHALLENGES AND NEEDS IN AFRICA AND ELSEWHERE. ([MORE...](#))

READ MORE

1

2

NEXT



VIA TORRE VERDE, 7
38122 TRENTO (TN) -
ITALIA
T. +39 0461 282289
INFO@EURICSE.EU
P.IVA 02111260226
C.F. 96080180225
CODICE SDI: W7YVJK9

NEWSLETTER

FACEBOOK

TWITTER

YOUTUBE

LINKEDIN